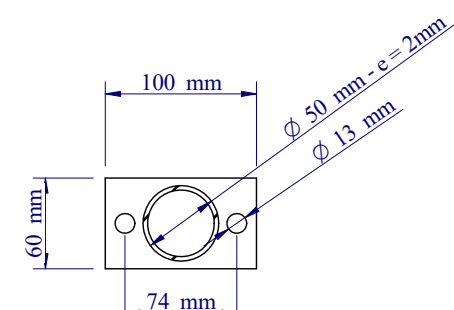


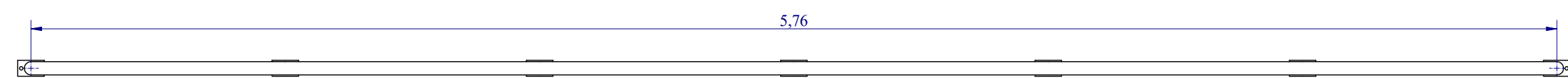
Vista Lateral - Guarda-Corpo "Tipo 01"  
1:20

K K

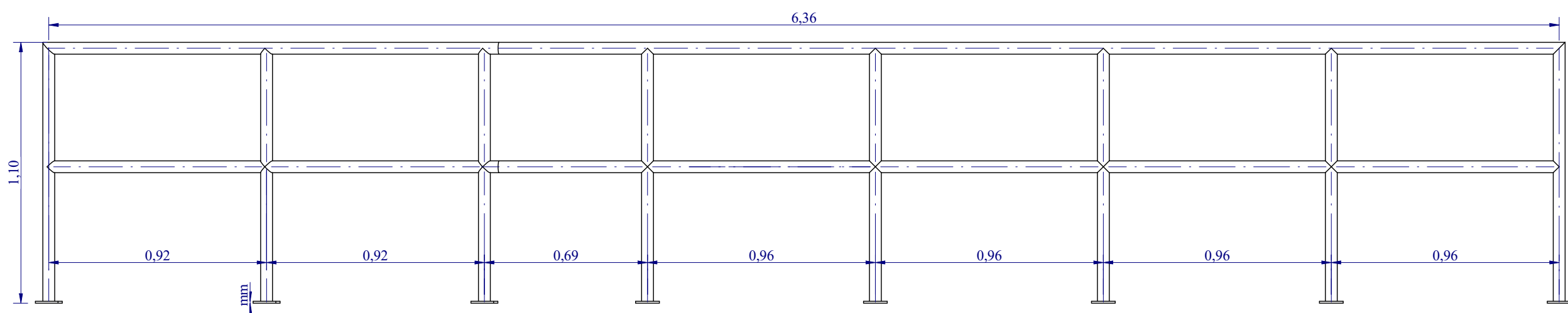


Corte K-K  
1:5

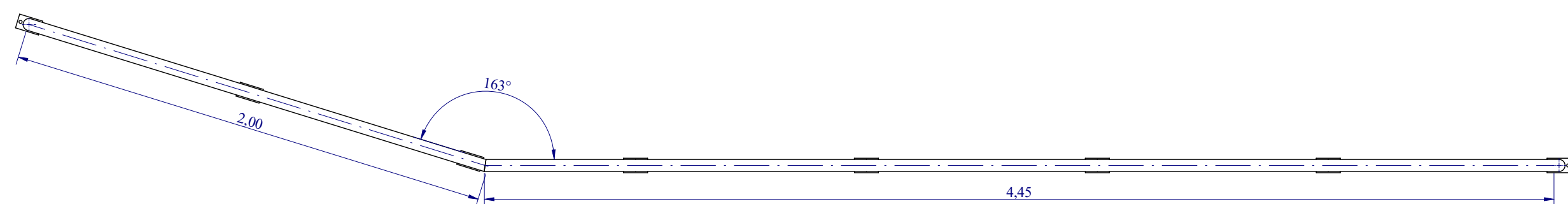
Detalhe típico de fixação de todos os  
pés dos guarda-corpos e corrimão.



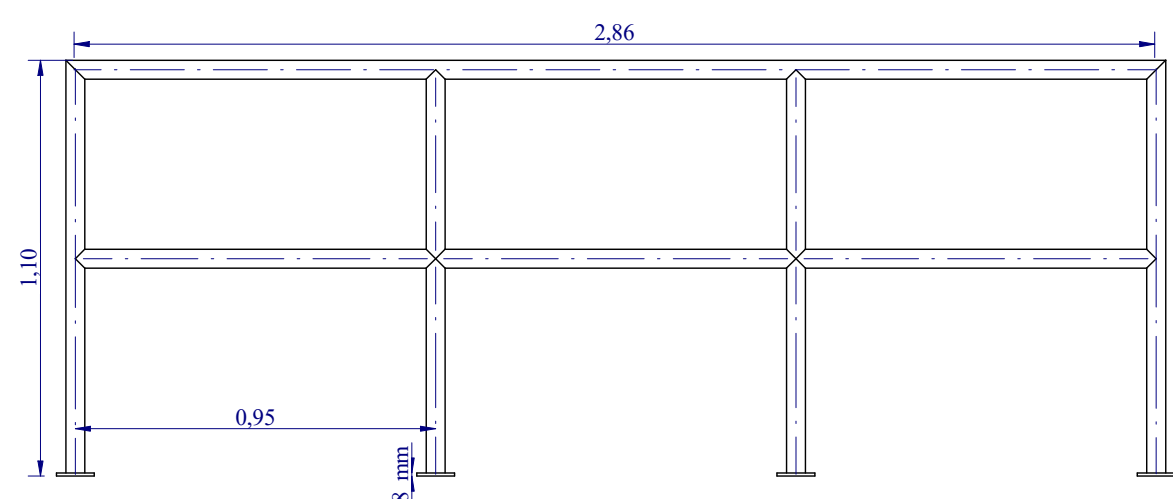
Vista Superior - Guarda-Corpo "Tipo 01"  
1:20



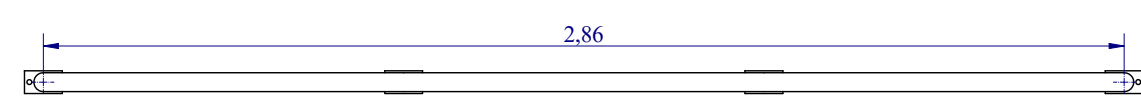
Vista Lateral - Guarda-Corpo "Tipo 02"  
1:20



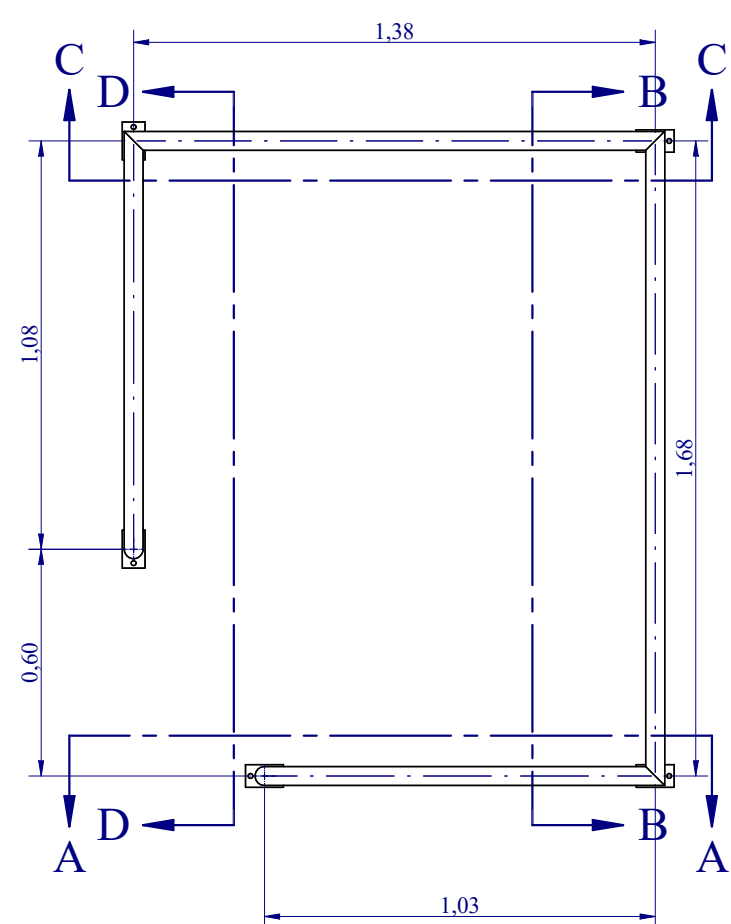
Vista Lateral - Guarda-Corpo "Tipo 02"  
1:20



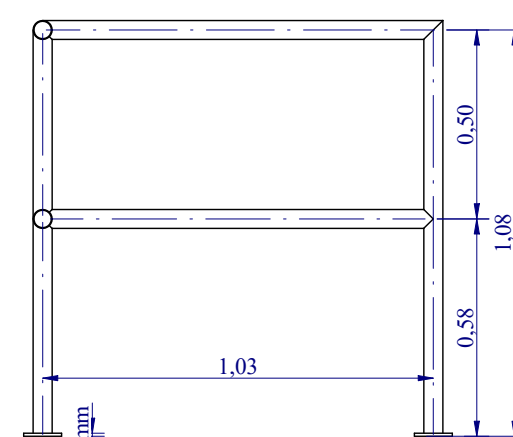
Vista Lateral - Guarda-Corpo "Tipo 03"  
1:20



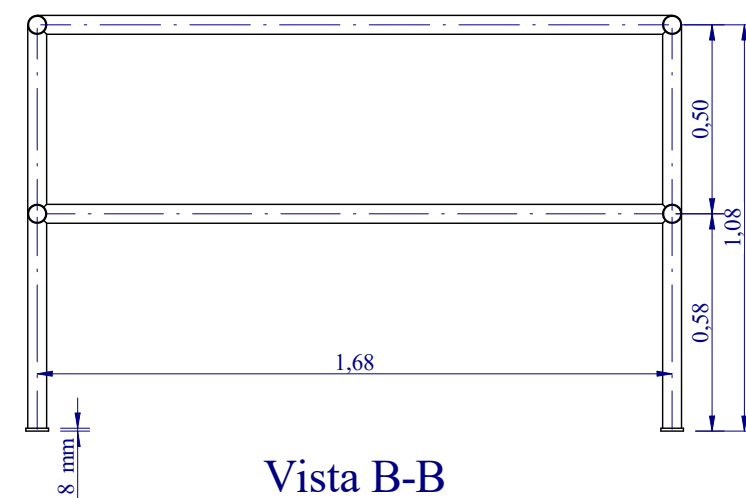
Vista Superior - Guarda-Corpo "Tipo 03"  
1:20



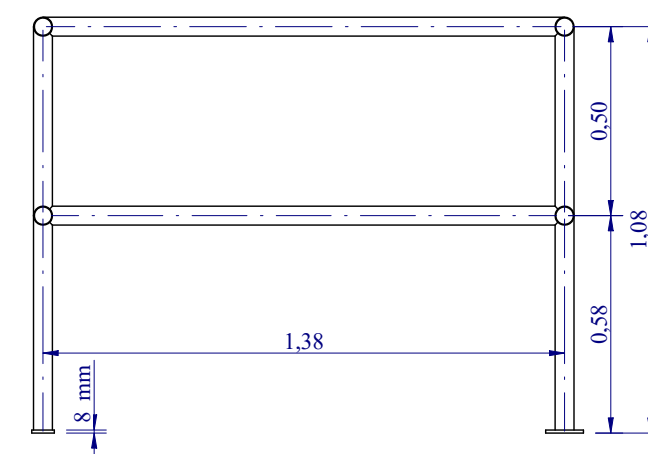
Vista Superior - Guarda-Corpo "Tipo 04"  
1:20



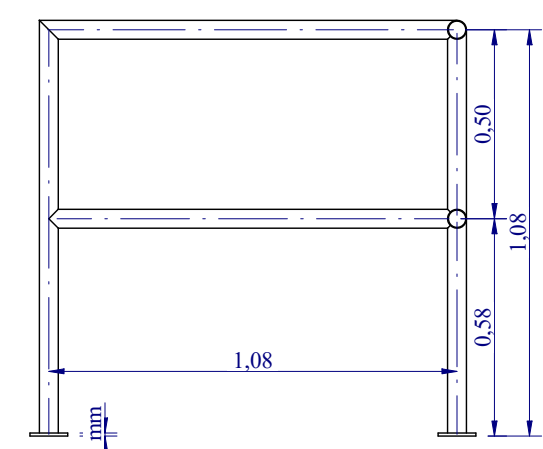
Vista A-A  
1:20



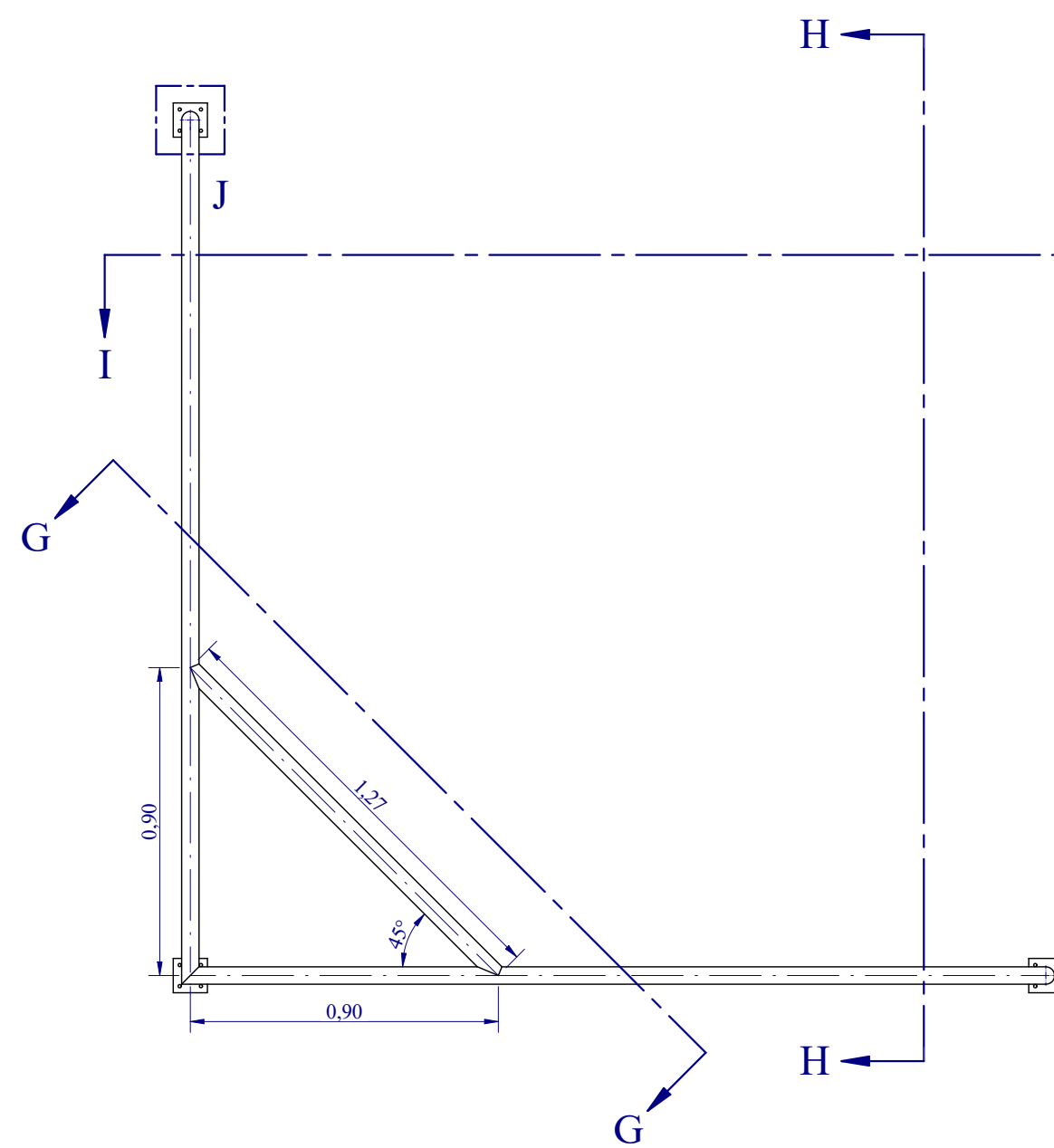
Vista B-B  
1:20



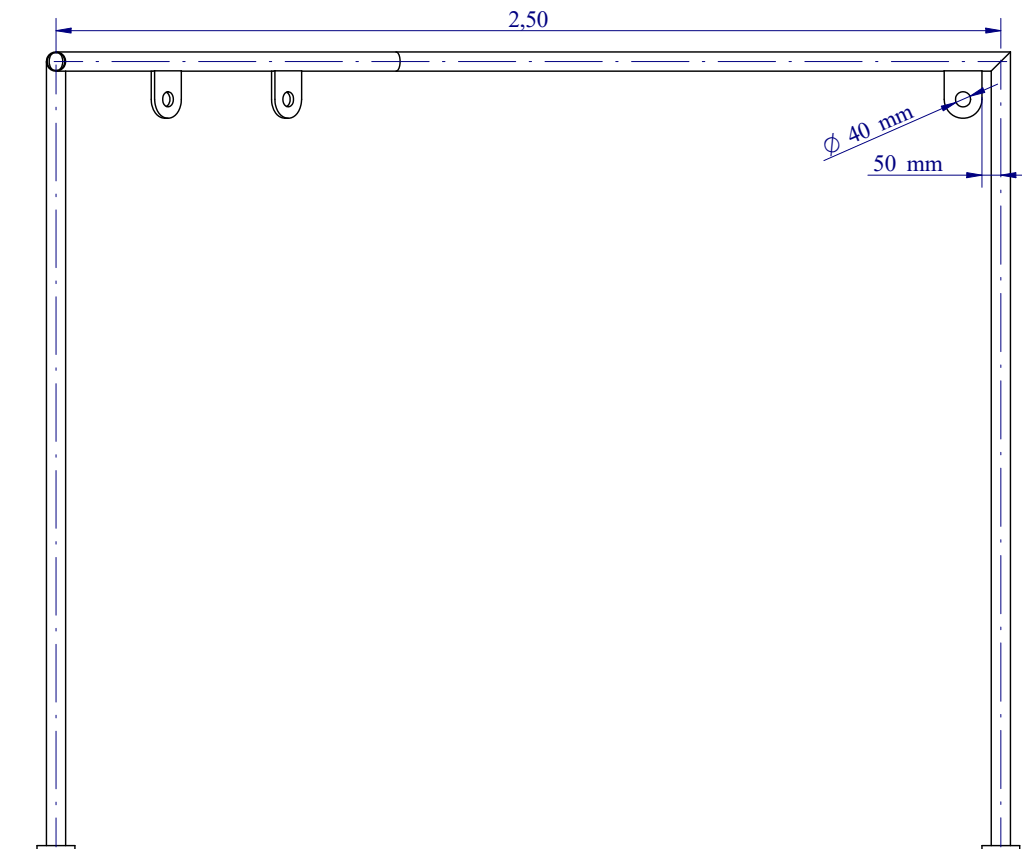
Vista C-C  
1:20



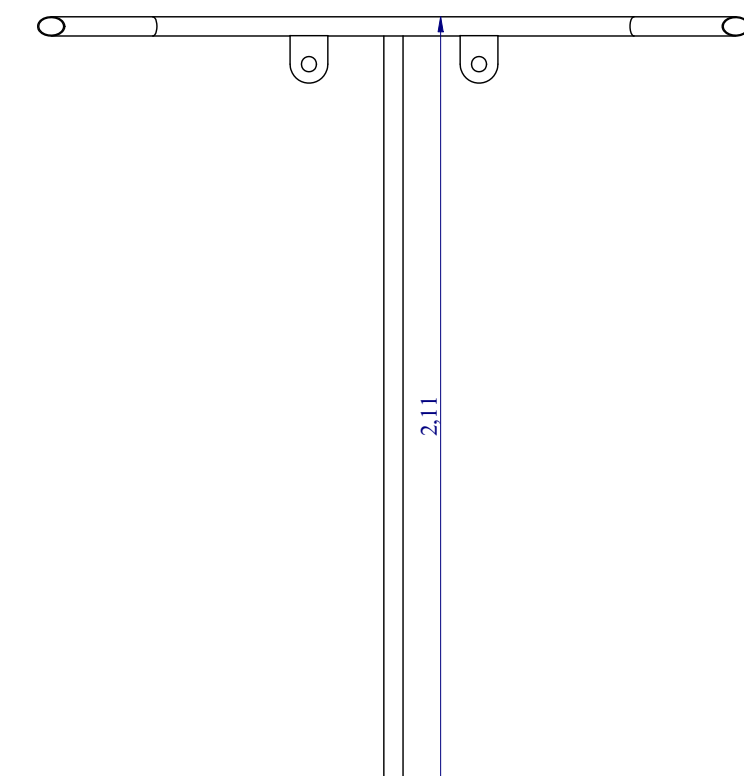
Vista D-D  
1:20



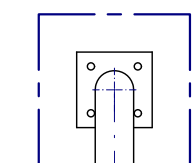
Vista Superior - Linha de vida  
1:20



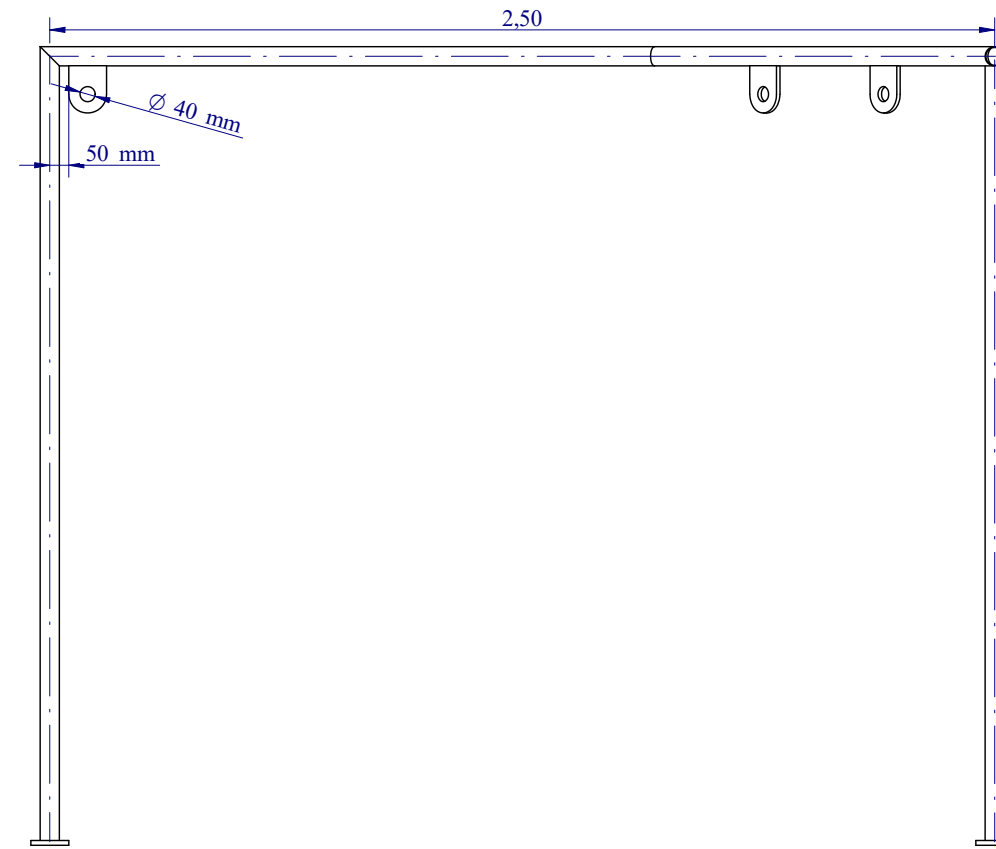
Corte H-H  
1:20



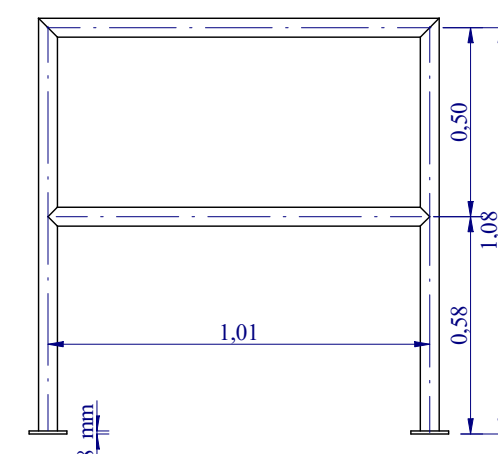
Corte G-G  
1:20



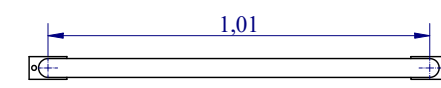
Detalhe J  
1:10



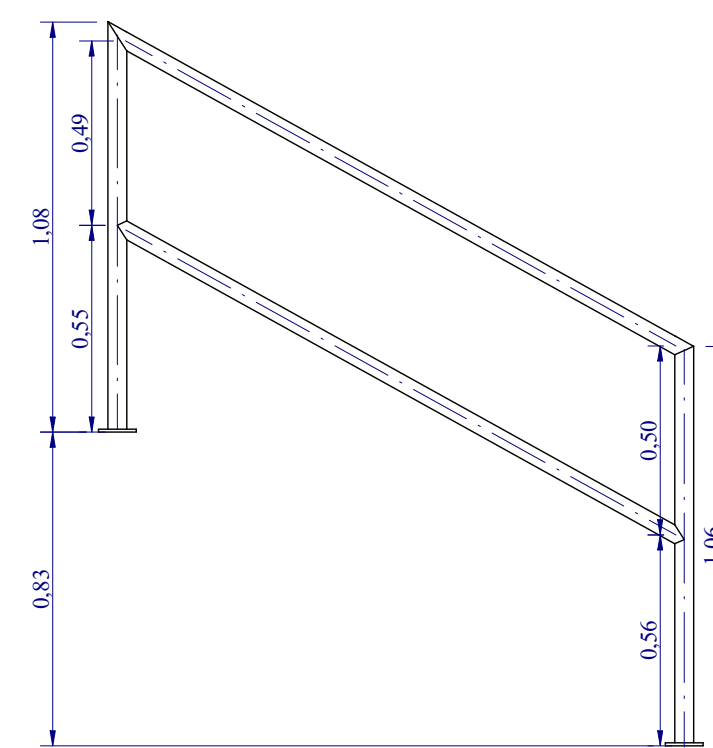
Corte I-I  
1:20



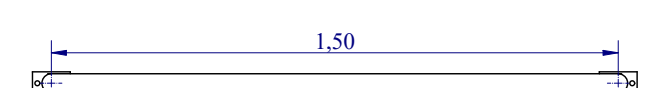
Vista Lateral - Guarda-Corpo "Tipo 05"  
1:20



Vista Superior - Guarda-Corpo "Tipo 05"  
1:20



Vista Lateral - Corrimão  
1:20



Vista Superior - Corrimão  
1:20

NOTA: Para projeto civil do abrigo do gerador de energia,  
entrada de energia, cercamento da área e portão,  
VER PROJETO ARQUITETÔNICO E URBANÍSTICO.

REVISÃO	DESCRIÇÃO	DATA	EXECUTADO	VERIFICADO	APROVADO
0	Emissão Inicial	12/07/2019	Luana Ribeiro	Luciano Noveas	Luciano Noveas
1	Revisão 1	30/07/2019	Luana Ribeiro	Luciano Noveas	Luciano Noveas
2	Projeto Executivo	12/08/2019	Luana Ribeiro	Luciano Noveas	Luciano Noveas

[16] 9.8134.0993 | [16] 3419.0906  
adm@novaes.eng.br | comercial@novaes.eng.br  
engenhar@novaes.eng.br | Rua São Joaquim, 550  
São Carlos / SP | [www.novaes.eng.br](http://www.novaes.eng.br)

Eng. Projetista: Luciano Farias de Noveas  
CREASP: 506233333 ART: 28027230190549114

Desenhista: Luana Ribeiro  
Escala: Indicadas Arquivo: Revisão 1

Data  
Agosto | 2019

Solicitante: **Serviço Autônomo de Água e Esgoto do Município de Sorocaba** folha 04/04

Projeto Executivo da Estação Elevatória de Esgoto na Avenida Dom Aguirre Margem Esquerda do Rio Sorocaba

Projeto Hidráulico  
Estação Elevatória de Esgoto Santa Rosália